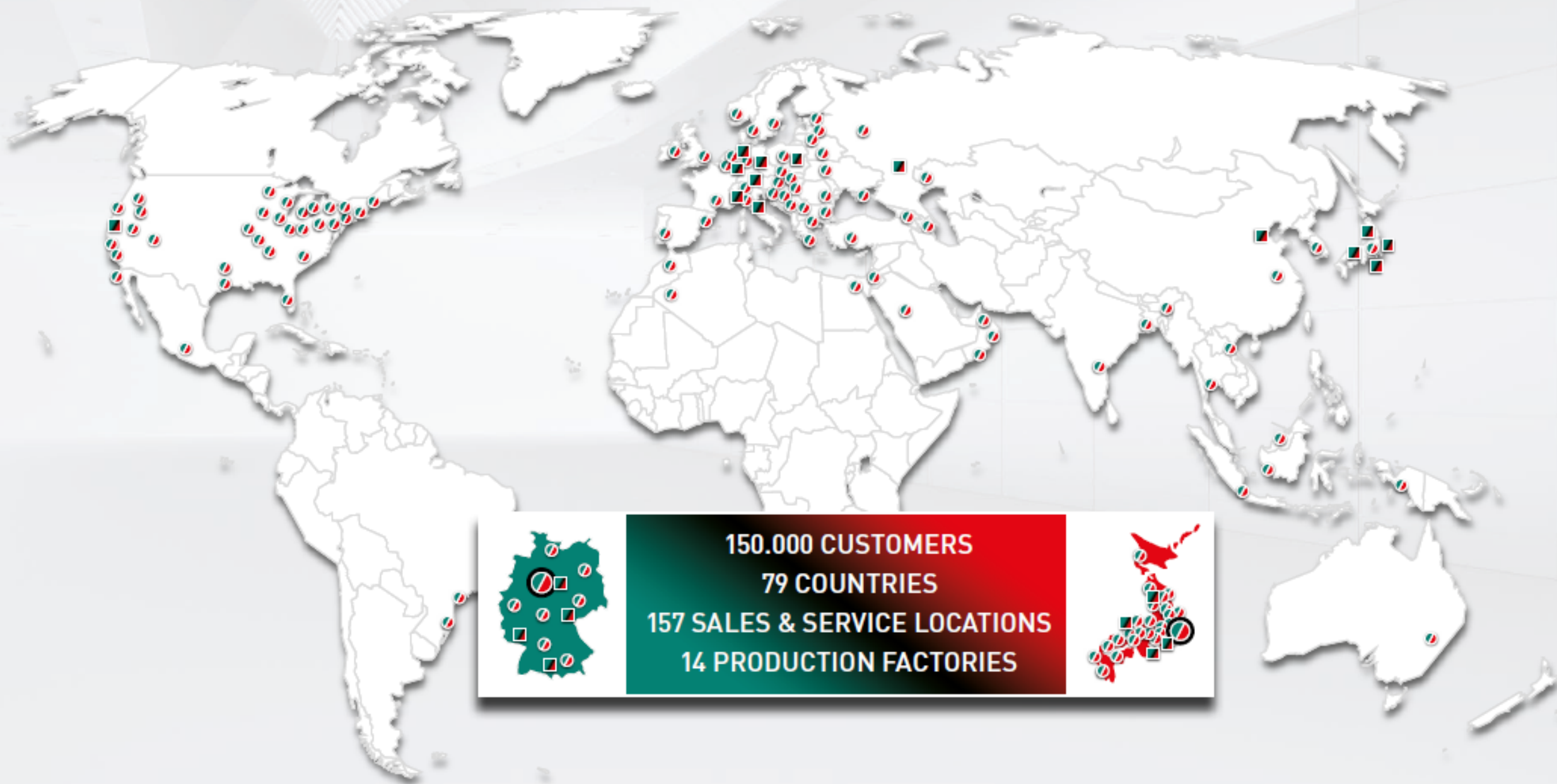


# DMG MORI – GLOBAL MARKET ACCESS

**DMG MORI**



# DMG MORI PROCESS CHAIN

**DMG MORI**

End-to-end competence  
from drawings  
to finished parts

**CELOS**

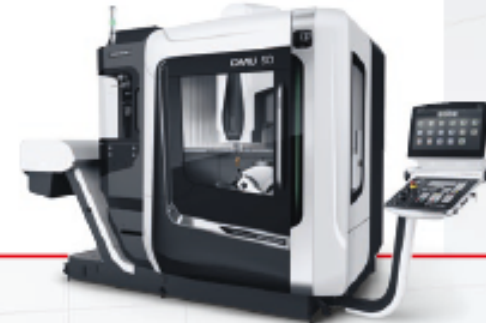


CAD / CAM

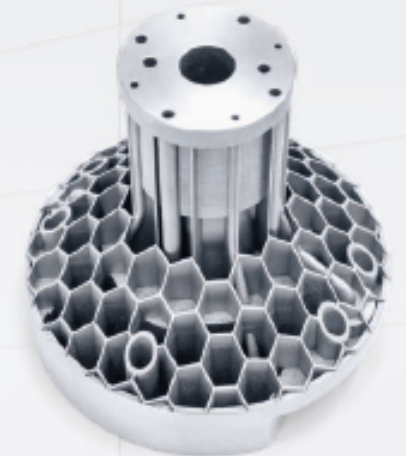
Additive Manufacturing → Milling



LASERTEC 30 *SLM* 2<sup>nd</sup> Gen.

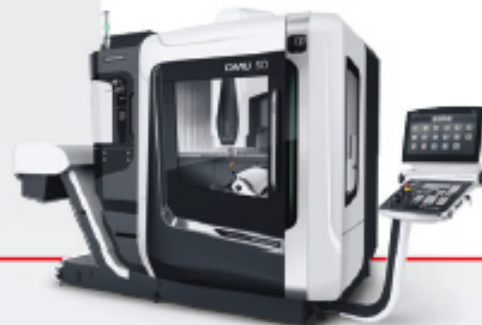


DMU 50 3<sup>rd</sup> Gen.

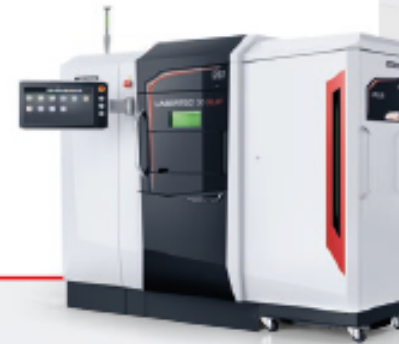


Powder nozzle body

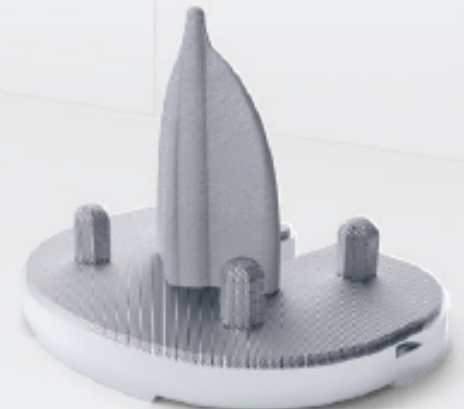
Milling → Additive Manufacturing



DMU 50 3<sup>rd</sup> Gen.



LASERTEC 30 *SLM* 2<sup>nd</sup> Gen.



Knee Implant

# LASERTEC SLM with rePLUG

**DMG MORI**

- + Integrated powder handling
- + Fastest material change <2h
- + CELOS: Consistent Software Solution
- + Open system
- + Top machine tool building competence



**MATERIAL  
CHANGE  
<2h**